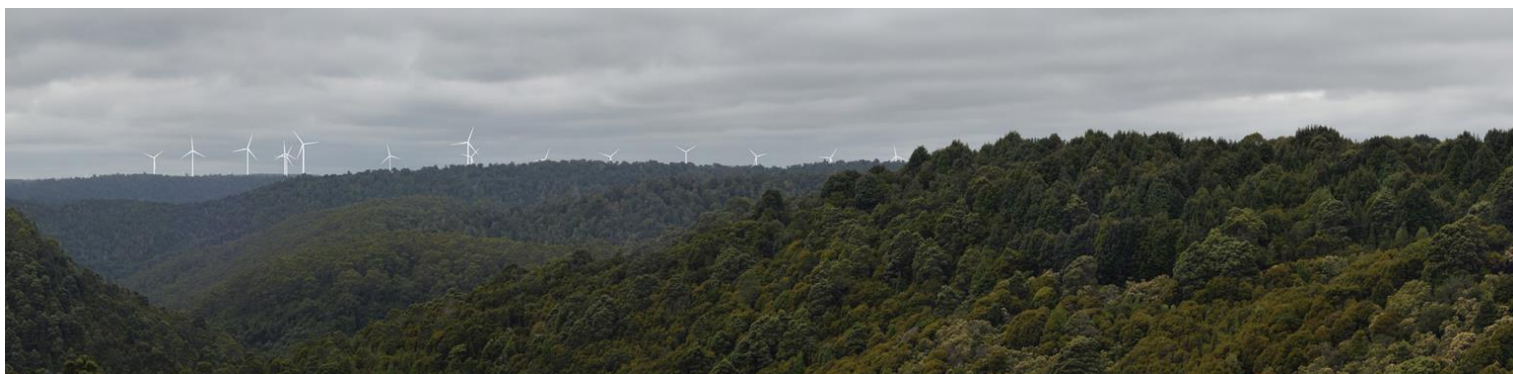


# Guildford Wind Farm



Photomontage showing what Guildford Wind Farm would look like from Waratah Falls in Waratah.

## Project update

Wind monitoring in the project area is continuing, further proving the excellent wind resource. There are several mobile wind monitoring units and a 122 m high meteorological mast located across the site.

The first year of onsite eagle utilisation surveys – five out of eight seasons – has been completed, with further studies due to commence soon. The wind turbine layout is currently being reviewed. The revised layout will form the basis for various other studies required by the Project Specific Guidelines. The project team is working towards lodging the development application in early 2025.

## Information sessions – 24 & 25 May

Interested local residents and community members are invited to attend public local information sessions for the proposed Guildford Wind Farm next month.

The sessions will provide an opportunity to ask questions and discuss the proposal in more detail with members of the project team.

Two sessions will be held, one in Waratah and one in Ridgley.

Please note information available at both sessions will be the same.

The sessions will also provide information for the Hellyer Wind Farm, being developed by Ark Energy and proposed for a location to the north (map overleaf).

### Waratah

4-7pm, Wednesday 24 May 2023

Athenaeum Hall (Tarkine Interpretation Centre), 18 Smith St, Waratah.

### Ridgley

4-7pm, Thursday 25 May 2023

Ridgley Community Centre, 2 Parker Court, Ridgley.

Everyone is welcome. Refreshments will be provided. To assist with catering please RSVP, noting which session you will attend, via email to: [info@guildfordwindfarm.com.au](mailto:info@guildfordwindfarm.com.au) by Monday 22 May.

The project team looks forward to meeting attendees and the opportunity to address any questions or concerns about these projects.

## Location



The project area for Guildford Wind Farm is about 7 km north-east of Waratah and 15 km south of Hampshire in the Waratah-Wynyard Council area.

It has an excellent wind resource, is used for commercial forestry operations and is traversed by high voltage powerlines.

It is located within one of Tasmania's candidate renewable energy zones, areas identified by the Australian Energy Market Operator as optimal for new renewable energy generation.

The proposal involves up to 80 wind turbines with an output capacity of up to 450 megawatts.

## Planning & assessment

The Development Application will be determined by Waratah-Wynyard Council and the Environmental Impact Statement (EIS) will be assessed by the Environment Protection Authority Tasmania (EPA).

1 Site selection and preliminary investigations ✓

2 Referral to the Australian Department of Climate Change, Energy, the Environment and Water (DCCEEW) for review under the Commonwealth *Environment Protection and Biodiversity Conservation Act 1999* (EPBC Act). ✓

\* Determined a controlled action with assessment under bilateral agreement (Ref 2020/8797).

3 Notice of Intent lodged with the EPA ✓

4 Project Specific Guidelines for the project's EIS issued by the EPA ✓

5 Studies, assessments, site design **WE ARE HERE**

6 Preparing EIS for lodgment

7 Development application (DA) and EIS submitted to Waratah-Wynyard Council

8 EIS referred by Council to the EPA

9 EIS on exhibition for public comment

10 Responses to submissions and requests for additional information (if required)

11 Assessment by the EPA

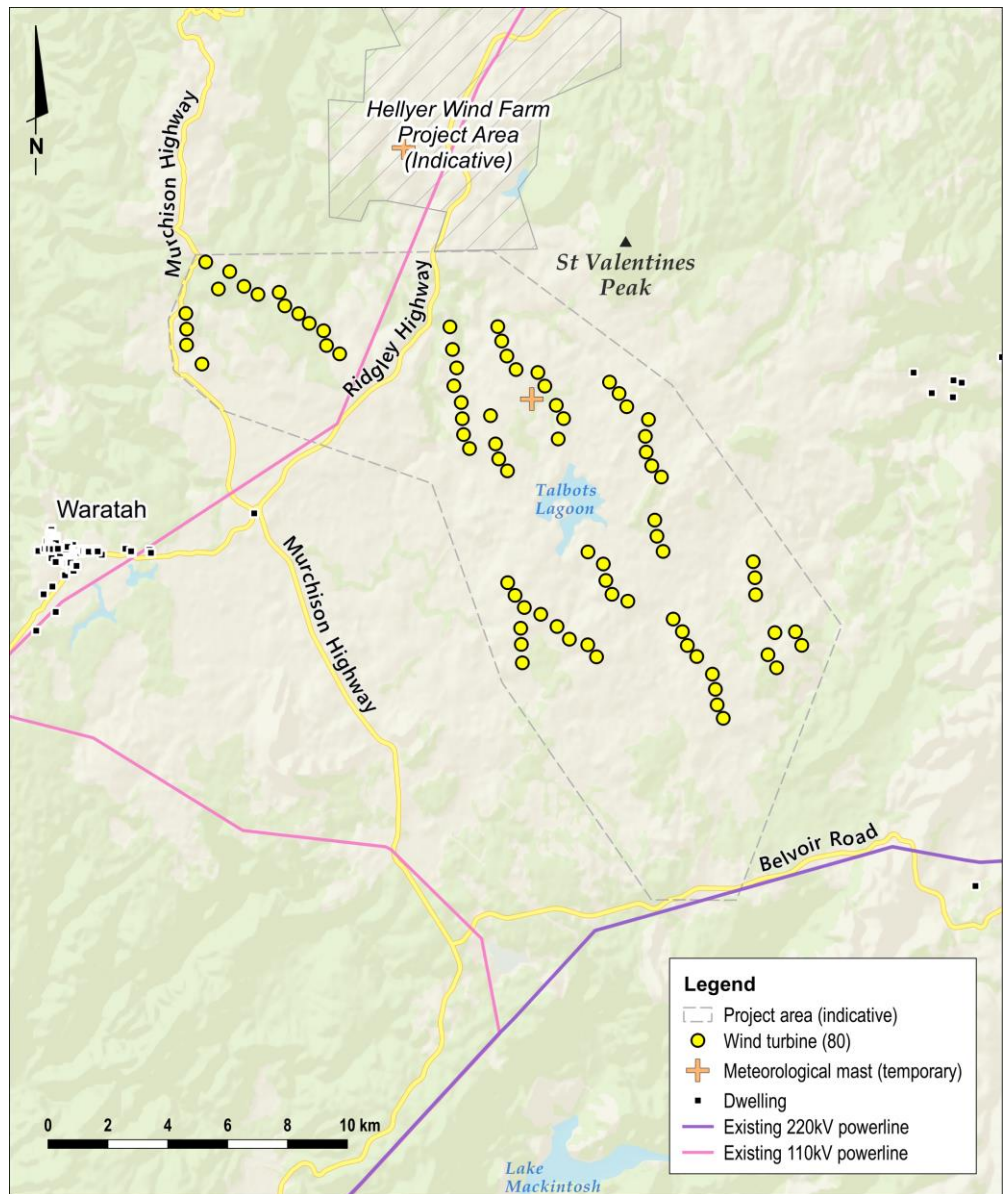
12 EPA decision, approval conditions provided to Council

13 Assessment by Council

14 Determination by Council

15 Determination by DCCEEW

## Guildford Wind Farm indicative layout – 80 wind turbines



Map above shows the initial proposed layout for the Guildford Wind Farm of 80 wind turbines. The project area is adjacent to the site for another Ark Energy project, Hellyer Wind Farm.

## Questions and comments

Ark Energy welcomes input from community members and other interested parties to help shape the project and maximise local benefits.

Questions and feedback are welcome at any time and where practicable input from the community and local stakeholders is incorporated into the project design to improve outcomes.

Comments can be sent directly to the project team via the contact details below or the feedback form available under the 'Feedback' tab on the project website.

### More information

Tel - 1800 731 296

Email - [info@guildfordwindfarm.com.au](mailto:info@guildfordwindfarm.com.au)

Register for updates - [arkenergy.com.au/mailling-list-details](http://arkenergy.com.au/mailling-list-details)

Website - [guildfordwindfarm.com.au](http://guildfordwindfarm.com.au) or scan QR code right



Scan QR code to visit the website