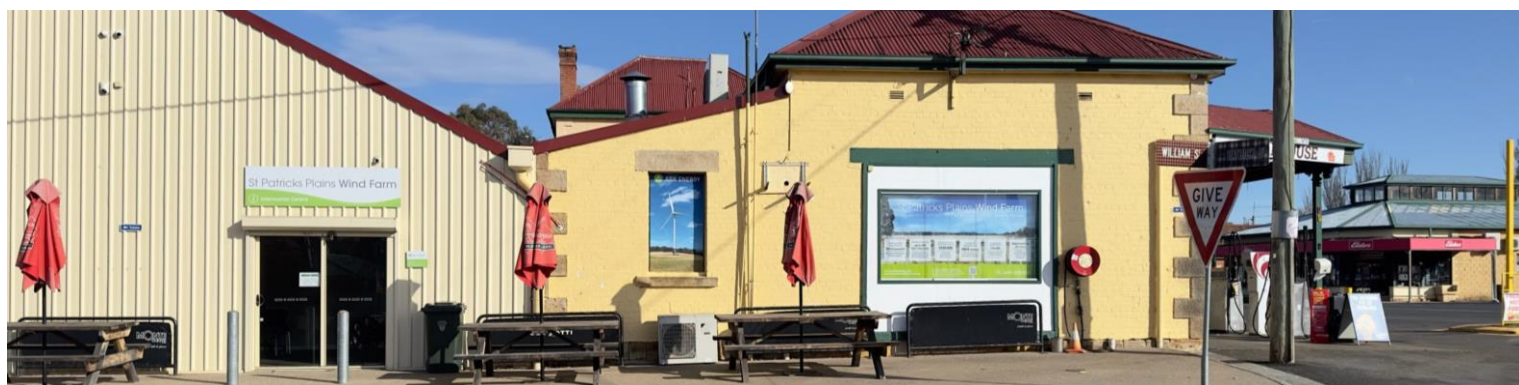


# St Patricks Plains Wind Farm



St Patricks Plains Wind Farm Information Centre in Bothwell

## Exhibition period completed

The public exhibition period for the project's Development Application (DA) and Environmental Impact Statement (EIS) closed on Monday 25 September at 5pm.

A total of 160 representations were made to the Central Highlands Council (Council), the responsible planning authority.

The project team thanks everyone who took the time to read the wind farm documents and to those who put in a submission.

## Next steps

The Environment Protection Authority (EPA) has sought clarification from Ark Energy on matters raised by State government agencies and the Commonwealth Department of Climate Change, Energy, the Environment and Water (DCCEEW), as well as the public and other relevant stakeholders. Ark Energy is working on a supplementary report to respond to these matters.

Following submission of the supplementary report, the EPA will undertake its assessment of the project. If the EPA determines the project to be acceptable it will provide approval conditions to Council. Council has appointed an independent planning consultant to assess the application on its behalf. Council will consider the recommendation of their independent planning consultant and make their determination on the DA against the provisions of the planning scheme, considering representations received.

Following Council's determination the project will then be subject to approval by DCCEEW under the *Environment Protection and Biodiversity Conservation Act 1999* (EPBC Act)

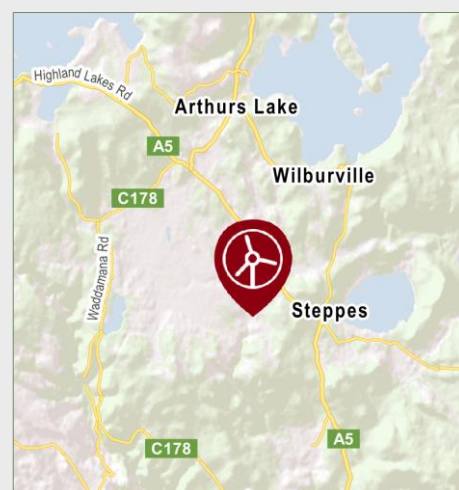
The project team is working towards an anticipated approval date in late 2024.

## Neighbour participation program

A neighbour participation program is available to residents who live within 3 km of a proposed wind turbine location. If you feel that you may be eligible to participate in this program and have not yet spoken to the project team, please contact us (contact details overleaf).

Please note, all wind turbine locations are at least 3 km from the settlements of Wilburville, Flintstone, Shannon and Penstock Lagoon.

## Location



The site for St Patricks Plains Wind Farm is about 10 km south-east of Miena and 25 km north of Bothwell in the Central Highlands.

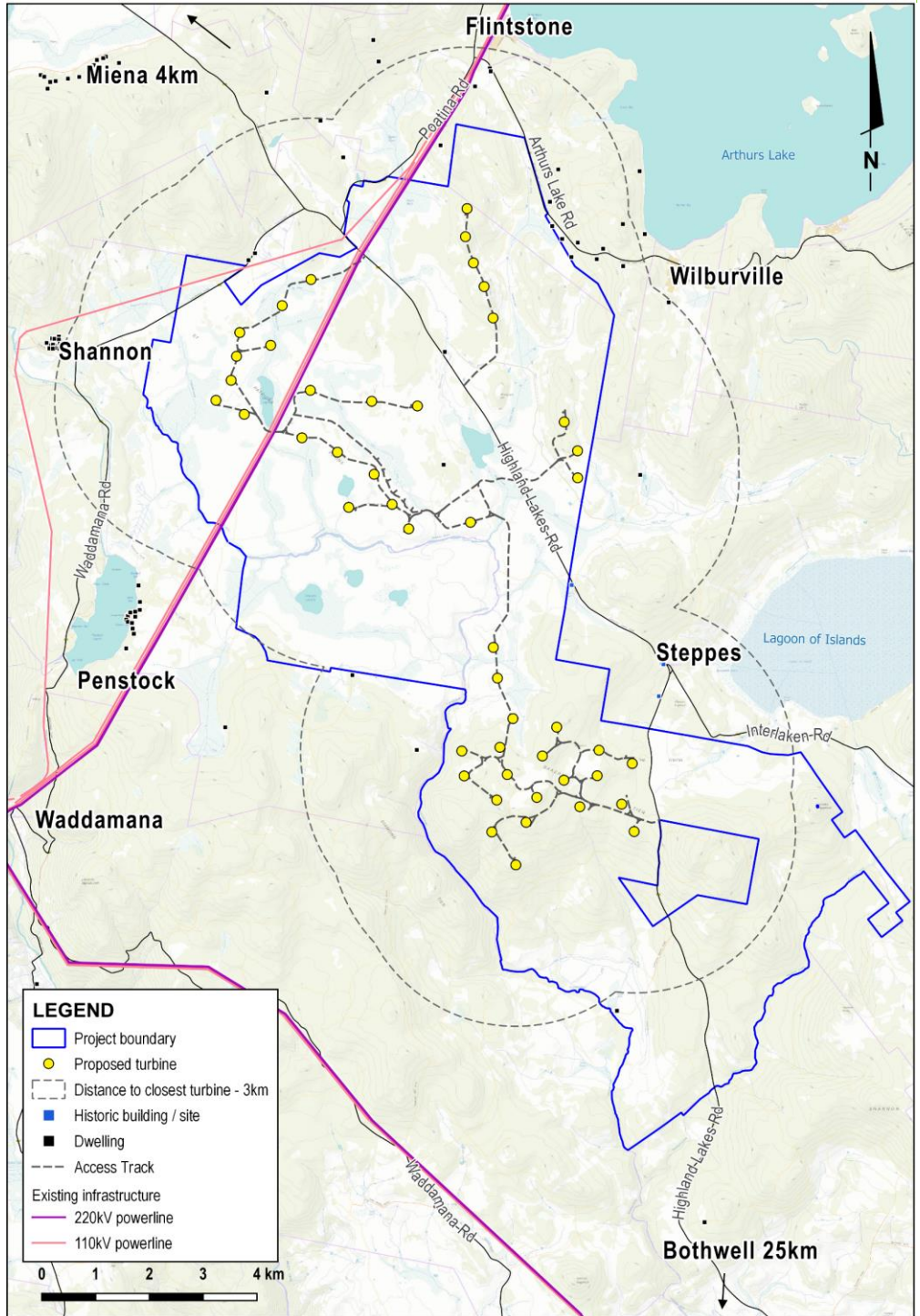
### Key project information:

- Up to 47 wind turbines.
- Wind turbine tip height of 231m.
- Up to 300 megawatts of clean, renewable energy.
- Up to 200 jobs during construction.
- Up to 20 full-time jobs during operation.
- Construction period of 24 months.
- Community Benefit Fund for the life of the wind farm.

## Planning & assessment

The Development Application will be determined by Central Highlands Council and the Environmental Impact Statement will be assessed by the Environment Protection Authority Tasmania

## St Patricks Plains Wind Farm site map - 47 wind turbines



1 Site selection and preliminary investigations ✓

2 Referral to the Australian Department of Climate Change, Energy, the Environment and Water (DCCEEW) for review under the Commonwealth *Environment Protection and Biodiversity Conservation Act 1999* (EPBC Act).  
\* Determined a Controlled Action with assessment under bilateral agreement (Ref 2019/8497). ✓

3 Notice of Intent lodged with the EPA ✓

4 Project Specific Guidelines for the EIS issued by the EPA ✓

5 Studies, assessments, site design ✓

6 Preparing EIS for lodgment ✓

7 Development application (DA) and EIS submitted to Central Highlands Council ✓

8 EIS referred by Council to the EPA ✓

9 EIS on exhibition for public comment ✓

10 Responses to submissions and EPA request for additional information. **WE ARE HERE**

11 Assessment finalised by the EPA

12 If approved, EPA conditions provided to Council

13 Assessment finalised by Council

14 Determination by Council

15 Determination by DCCEEW

### Questions

Thank you to all those who have engaged with us on this project to date.

Questions and feedback are welcome and can be sent directly to the project team via the contact details below and at the 'Feedback' tab on the website.

### More information

**Visit** - St Patricks Plains Wind Farm Information Centre, 16a Patrick Street, Bothwell. Open 10am - 4pm Fridays.

**Phone** - 1800 731 296.

**Email** - [info@stpatricksplainswindfarm.com.au](mailto:info@stpatricksplainswindfarm.com.au)

**Updates** - [arkenergy.com.au/mailling-list-details](http://arkenergy.com.au/mailling-list-details)

**Website** - [stpatricksplainswindfarm.com.au](http://stpatricksplainswindfarm.com.au) / scan QR code



Scan QR CODE to visit the website