



**ARK ENERGY**

# **Bowmans Creek Wind Farm Stage 2**

**Community Information Session – Mt Olive**

**4-6pm Wednesday, 3 April 2024**

# Acknowledgement of Country

I would like to acknowledge the Wanaruah people that are the Traditional Custodians of this land on which we meet and their continuing connection to lands, waters and communities. I would also like to pay my respects to the Elders both past and present and extend that respect to other Aboriginal and Torres Strait Islanders who are present here today.

# Introductions

---

- Rebecca Riggs, Project Manager
- Melissa Pisani, Head of Communications
- Jane Ewers, Project Officer
- John Noonan, GIS Manager
  
- Sarah Bell, Umwelt, Senior Social Consultant



# Agenda

---

- Ark Energy
- Energy transition context
- Project details
- Assessment process
- Next steps
- Questions



# Ark Energy

- Renewable energy company specialising in greenfield utility-scale wind, solar, battery storage and green hydrogen.
- 20+ years of experience, 13 projects in development in NSW, Qld, Tas.
- Australian subsidiary of Korea Zinc; signatory to RE100 and committed to powering global operations from 100% clean energy by 2050; 25-years in Australia with Sun Metals zinc refinery and solar farm.
- Goal to decarbonise the energy supply of Korea Zinc, help third-party customers accelerate their energy transition and contribute to the transition of Australia's electricity market.



# Energy transition

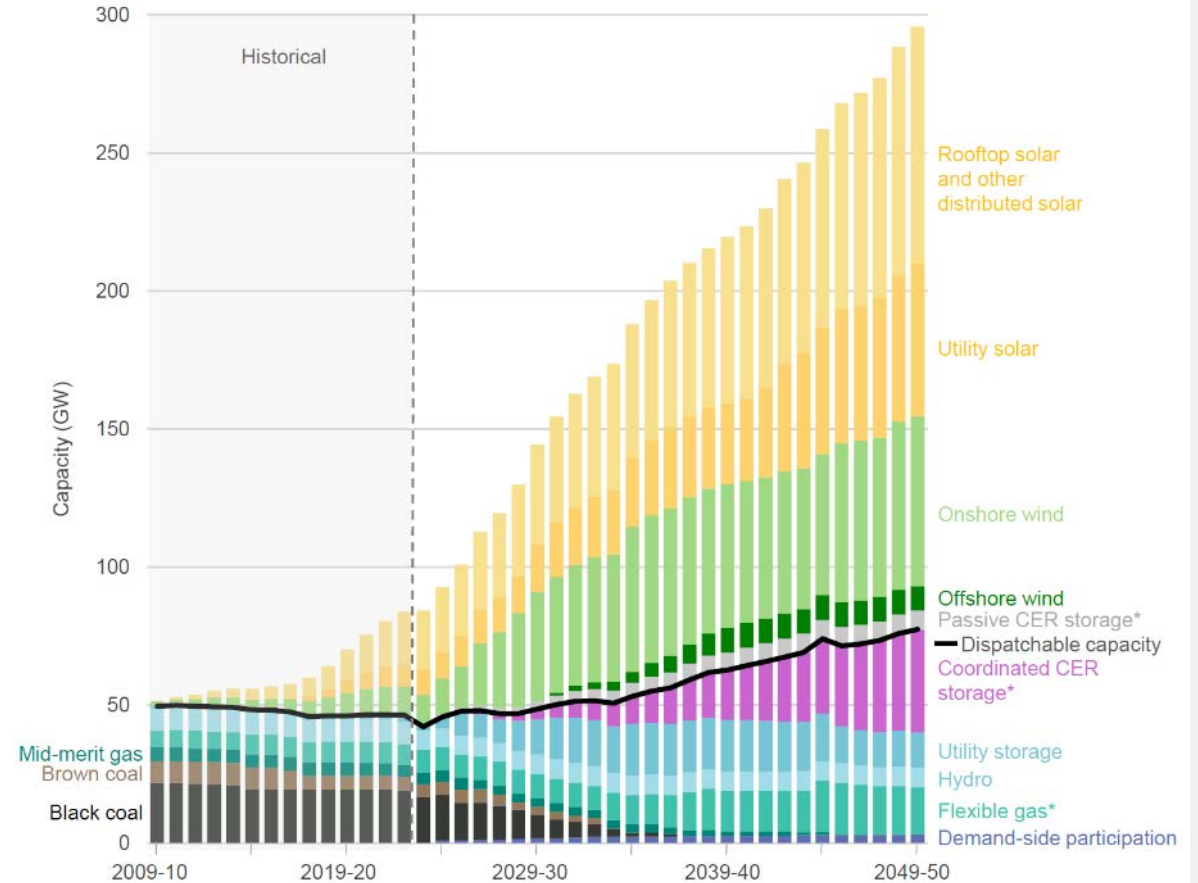
Australian Energy Market Operator's 2024 Integrated System Plan, 'Step-change scenario' predicts:

- 57 GW VRE and 19 GW battery storage required by 2030.
- Coal out of the National Electricity Market by 2038.
- 6 GW new RE generation required each year for the next decade.
- Requires speed and scale.

## National targets

- 82% energy in the National Electricity Market (NEM) from renewable sources by 2030.
- Emissions reduction of 43% (on 2005 levels) by 2030, net zero by 2050 - *Climate Change Act 2022*.
- RE in NEM FY22-23 = 36.8%

Figure 2 Capacity, NEM (GW, 2009-10 to 2049-50, Step Change)

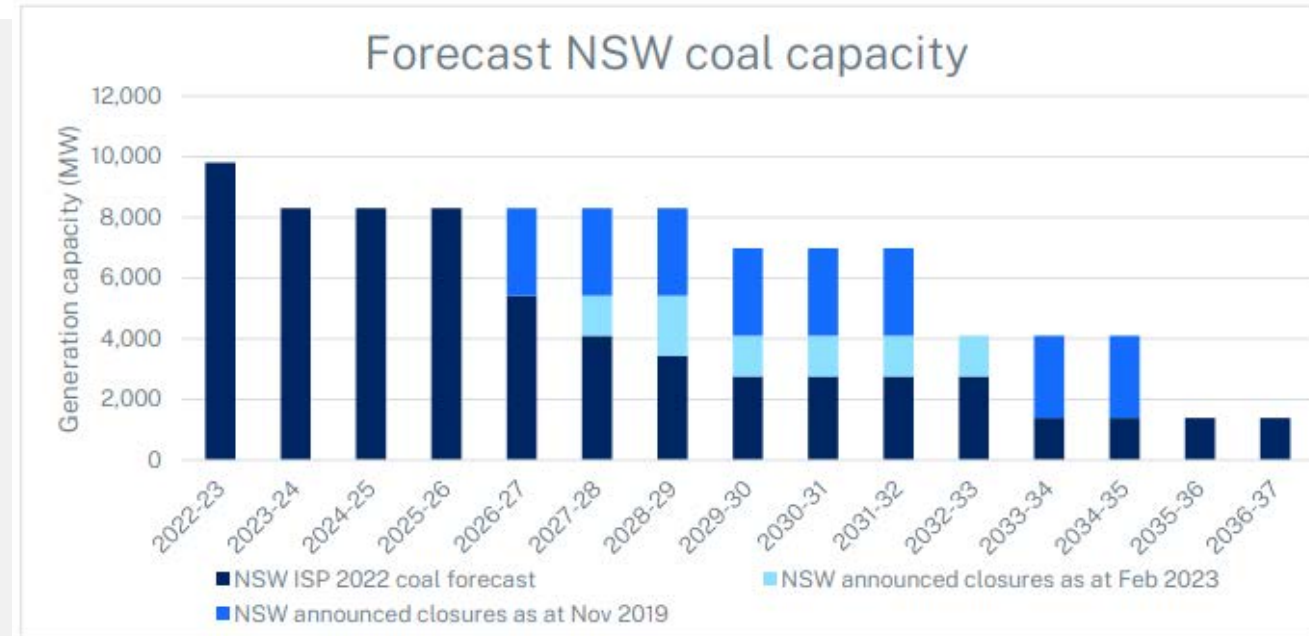


Notes: Flexible gas includes gas-powered generation, and potential hydrogen and biomass capacity. "CER storage" are consumer energy resources such as batteries and electric vehicles.



# Energy transition - NSW

- NSW RE in 2022 = 30.7%
- Emissions reduction (compared to 2005 levels) of 50% by 2030, 70% by 2035, net zero by 2050 - *NSW Climate Change (Net Zero Future) Act 2023*.
- NSW Electricity Infrastructure Roadmap (20-year plan to transform electricity system). Support private sector to deliver 12 GW of new RE generation and 2 GW of storage by 2030.
- Renewable energy zones
  - New England
  - Central West Orana
  - South West
  - Illawarra
  - **Hunter-Central Coast**

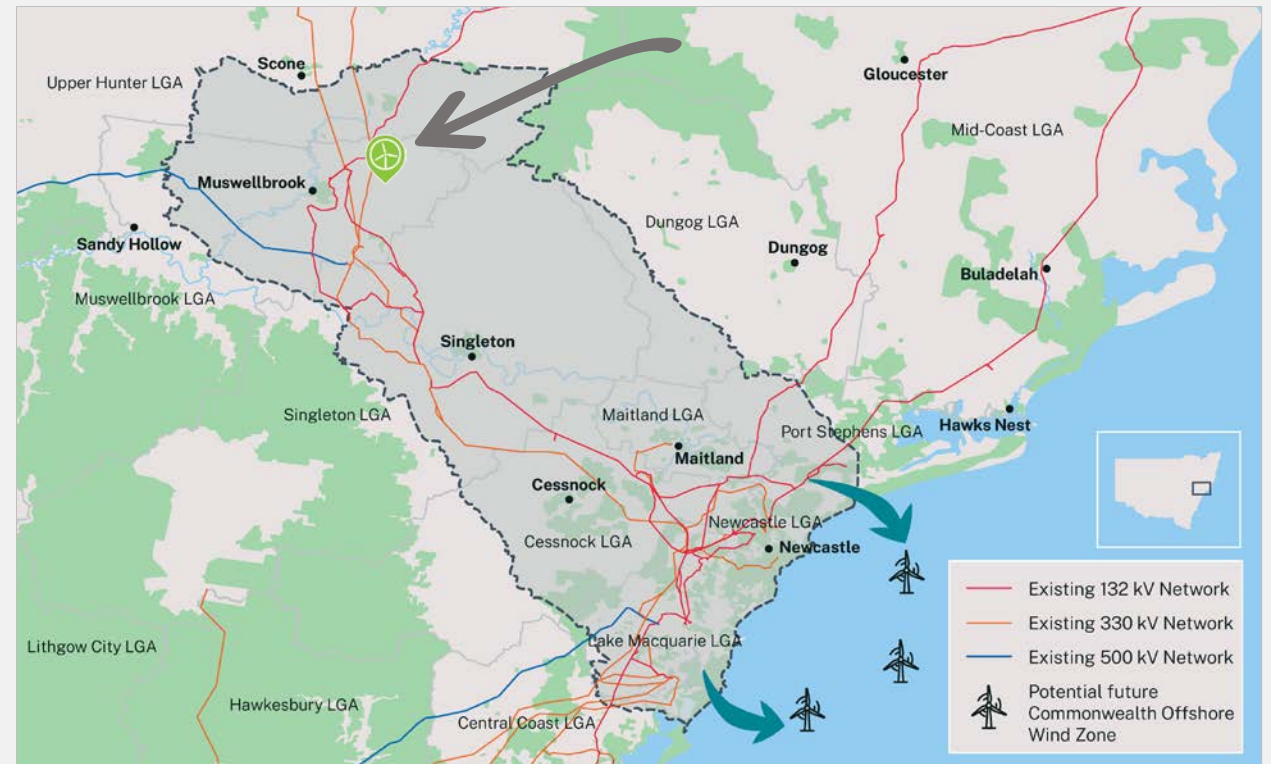


Source: NSW Electricity  
Infrastructure Roadmap benefits  
modelling report June 2023



# Bowmans Creek Wind Farm Stage 2

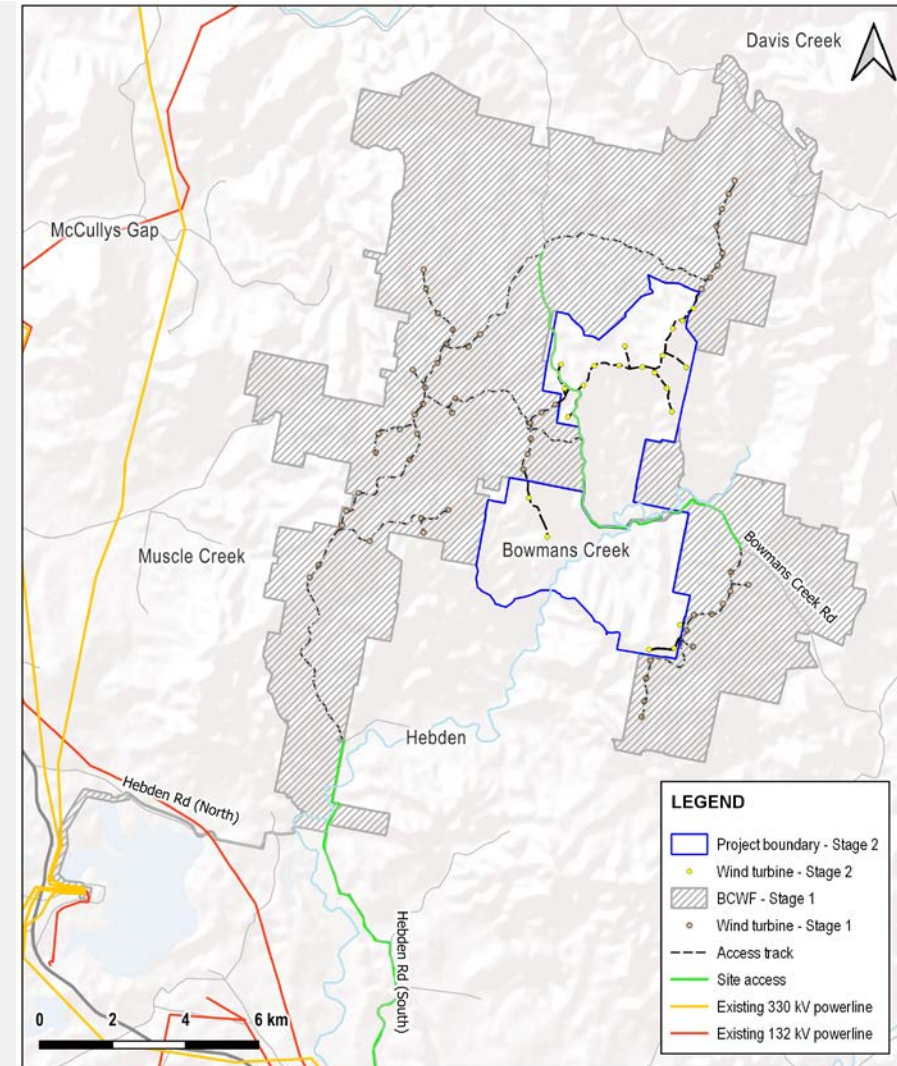
- Project area is in the Hunter-Central Coast Renewable Energy Zone.
- Located approximately 12km east of Muswellbrook township and 25km north-east of Singleton.
- The project area is within two LGAs;
  - Singleton Shire Council
  - Muswellbrook Shire Council
- Within a 10km radius of the site there are 3 operational coal mines and three quarries.
- Bayswater Power station and the recently closed Liddell Power station are located ~10km southwest of the project site.





# Bowmans Creek Wind Farm Stage 2

- 21 wind turbines
- Generation capacity ~120 MW
- Substation
- Underground and overhead reticulation (low voltage powerlines)
- Local employment opportunities and economic benefits incl:
  - Economic boost for the region.
  - Voluntary Planning Agreement – will be agreed with Muswellbrook and Singleton Councils.
  - Construction jobs and ongoing full-time jobs for operation.



# Construction



Foundation pour: Rye Park Wind Farm  
Source: Zenviron



Completed hardstand: Rye Park Wind Farm  
Source: Zenviron



# Construction



Helicopter Stringing powerline: Rye Park Wind Farm  
Source: Zenviron

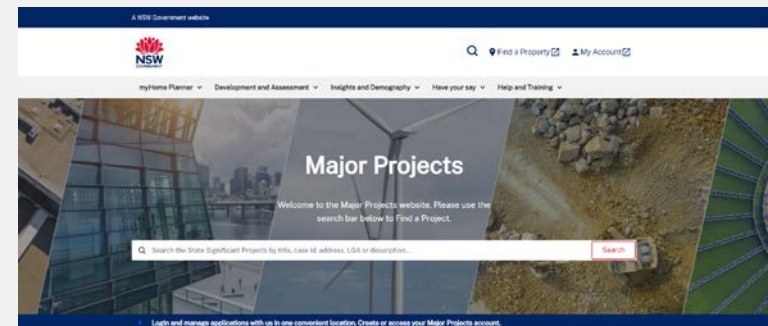


Tower crane: Rye Park Wind Farm  
Source: Zenviron



# Assessment process

- Assessed by the NSW Department of Planning, Housing and Infrastructure (DPHI) under *Environmental Planning and Assessment Act 1979* (NSW).
- Considered State Significant Development – NSW Government is approval authority.
- Scoping Report to be submitted to DPHI.
- Planning Secretary's Environmental Assessment Requirements (SEARs) for the project to be issued by DPHI = requirements for the environmental impact statement (EIS).
- To be referred to Department of Climate Change, Energy, the Environment and Water for review under Commonwealth *Environment Protection and Biodiversity Conservation Act 1999* (EPBC Act).
- After EIS lodged and deemed adequate, it will be placed on public exhibition for submissions (online).
- Ark Energy must respond to submissions.
- Assessment and determination by DPHI (or IPC)



# Environmental impact statement (EIS)

---

SEARs will prescribe the information and independent technical assessments required, including:

- Detailed Description
- Capital Investment Value and Employment
- Independent technical and specialist assessments for:
  - Landscape and Visual
  - Noise and Vibration
  - Biodiversity
  - Cultural Heritage
  - Transport
  - Water and Soils
  - Land
  - Hazards and Risks, such as aviation safety, telecommunications, bushfire and blade throw.
  - Social Impact
  - Economic
  - Waste
- Proposed environmental management and monitoring measures.



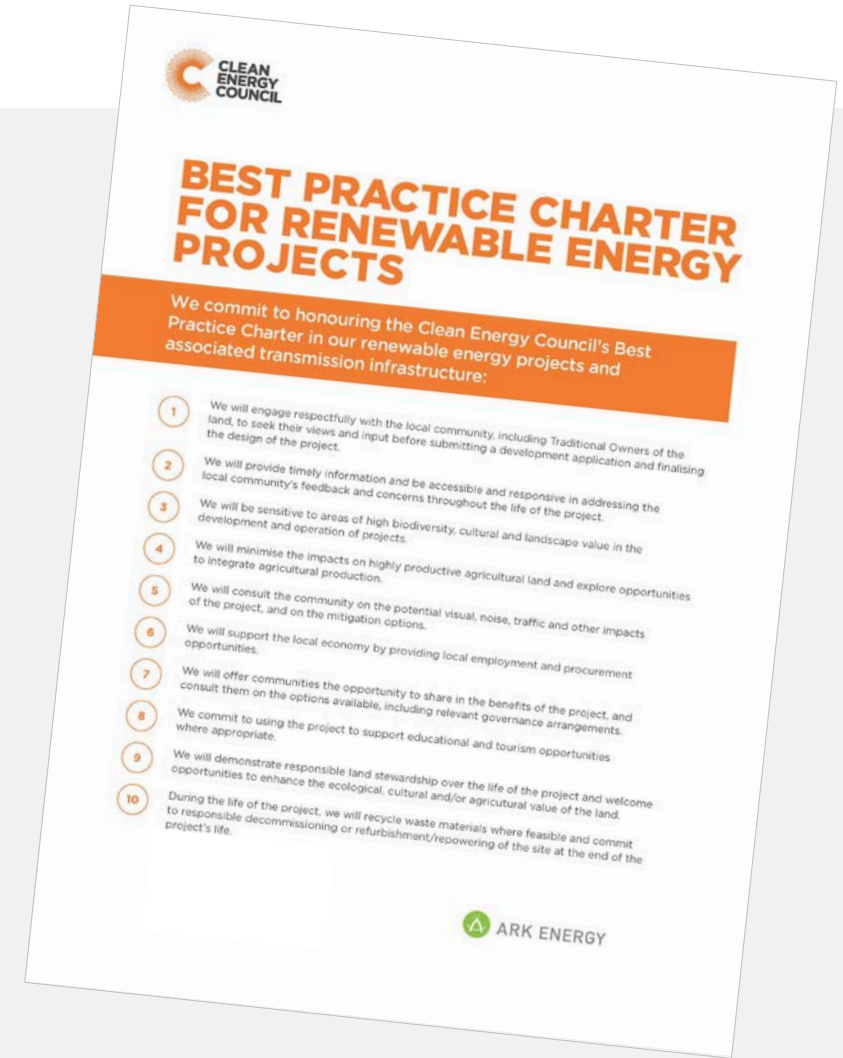
# Community engagement

- Guided by best practice and International Association for Public Participation (IAP2).
- Signatory to the Clean Energy Council's *Best Practice Charter for Renewable Energy Projects*.
- Open, accessible, transparent.

## Focused on:

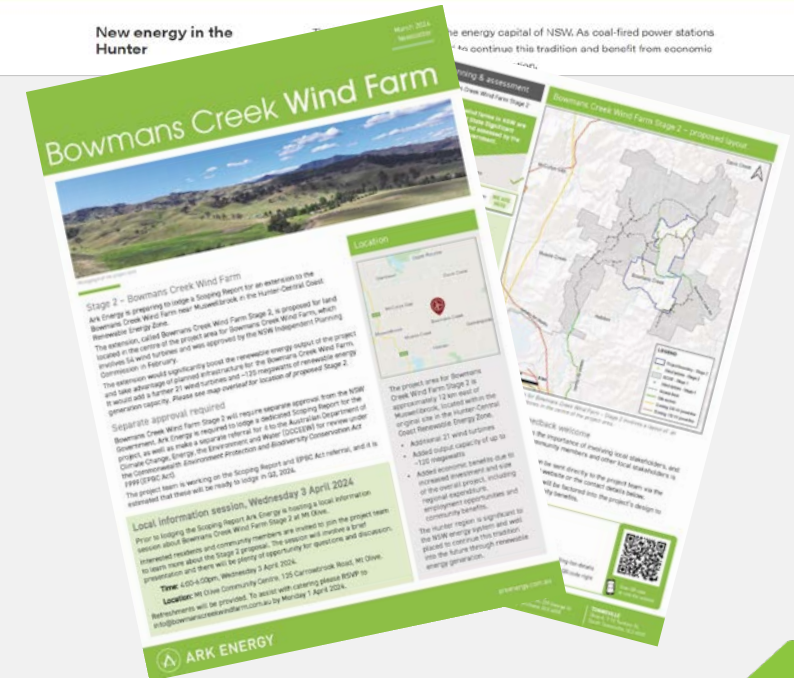
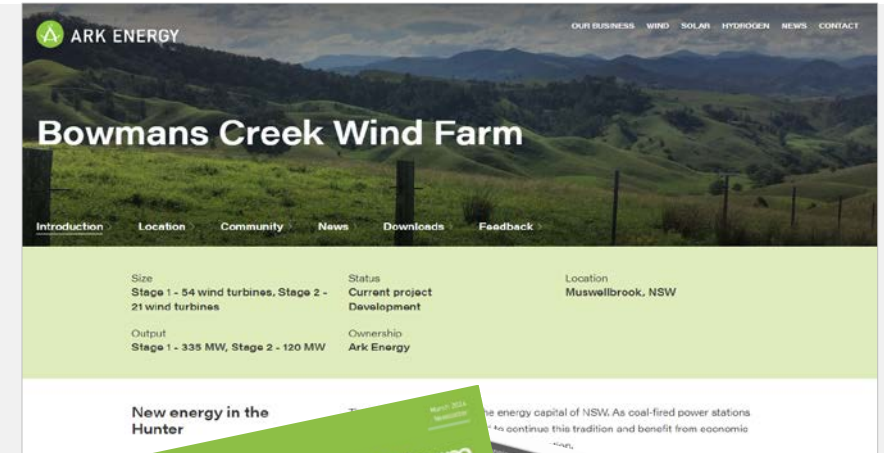
- Providing opportunities for interested community members and stakeholders to participate in the process.
- Maximising opportunities for the local/regional community to benefit in meaningful ways.

Community input is welcome and valued, and where practicable will be incorporated into the project design to improve outcomes and local benefits.



# Information, questions, feedback

- Website with online feedback form: [bowmancreekwindfarm.com.au](http://bowmancreekwindfarm.com.au)
- Project team direct contact details, anytime – [info@bowmancreekwindfarm.com.au](mailto:info@bowmancreekwindfarm.com.au) and 1800 731 296.
- Newsletters – available by email (register online at <http://arkenergy.com.au/mailling-list-details>) and/or by mail (provide postal address to the project team).
- Information sessions – advertised on website and in newsletters.
- Meetings / briefings as required.



# Next steps

---

- Lodge Scoping Report – Q2 2024
- Referral under EPBC Act - Q2 2024
- Work on EIS assessments and reports – Q3 2024 onwards
- EIS submission and exhibition – Q4 2024/Q1 2025
- DPHI collates public submissions
- Response to submissions – Q1 2025
- Approvals – Q2/Q3 2025
- Procurement & pre-construction – 2025/2026
- Construction commencement – 2026/2027





# Thank you

---

**Bowmans Creek Wind Farm Stage 2**

**T** 1800 731 296

**E** [info@bowmanscreekwindfarm.com.au](mailto:info@bowmanscreekwindfarm.com.au)

**W** [bowmanscreekwindfarm.com.au](http://bowmanscreekwindfarm.com.au)

